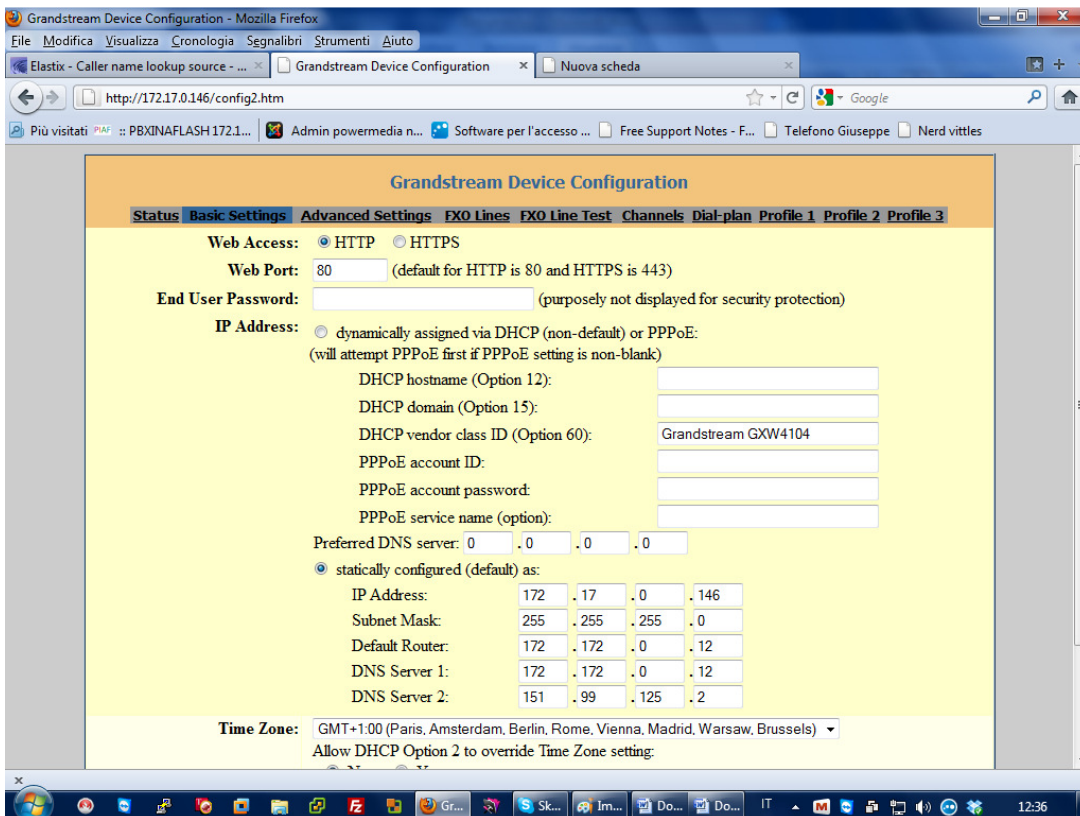
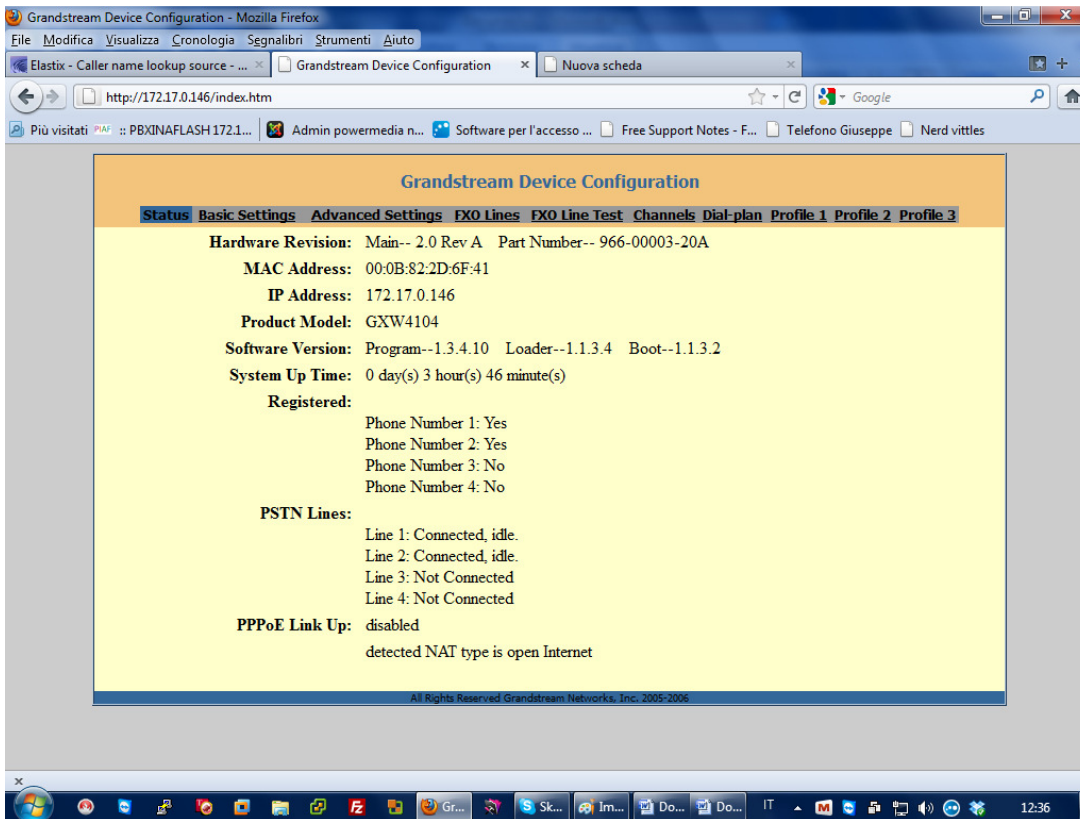
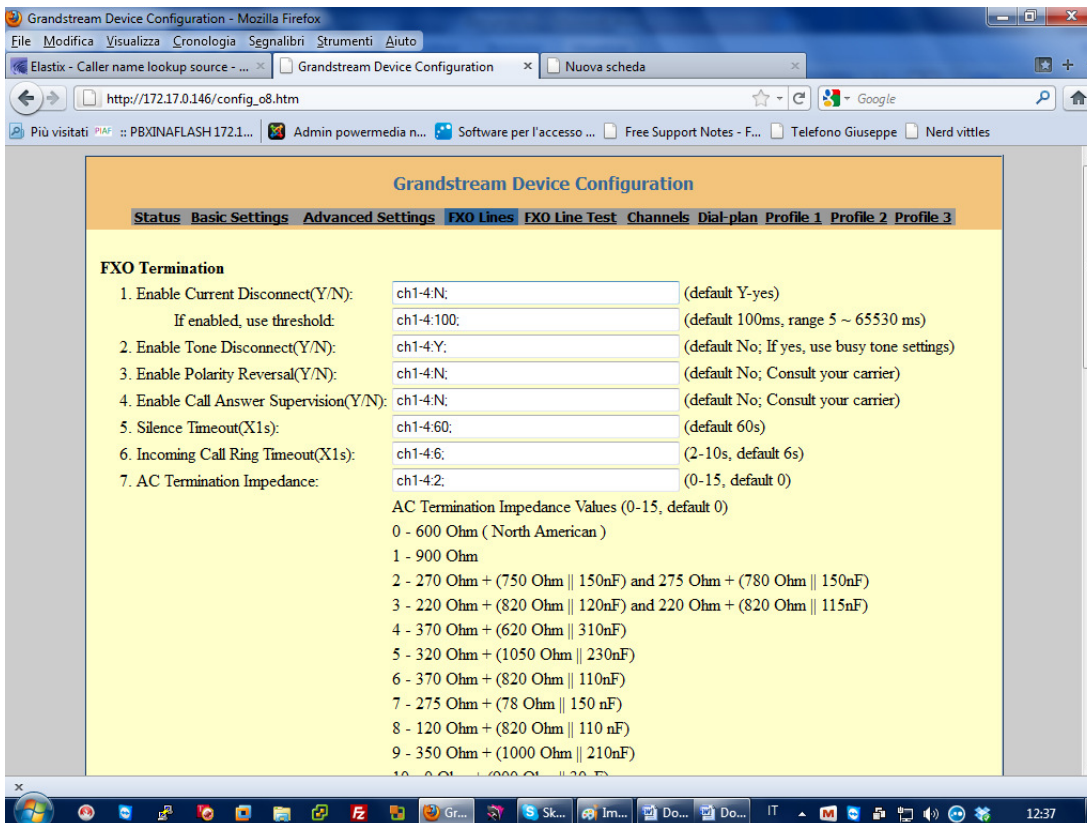
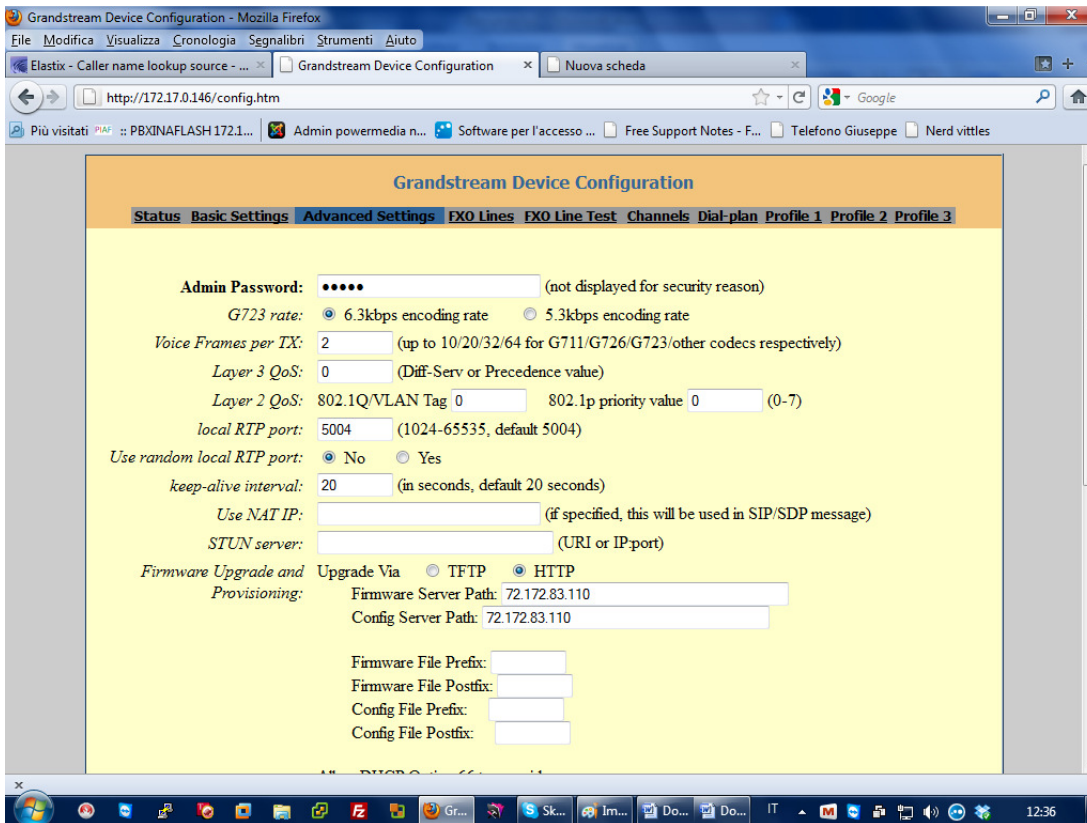


# Configurazione Granstream GXW4104 con FreePBX/Elastix/PBXinaFlash/Trixbox



# Configurazione Grandstream GXW4104 con FreePBX/Elastix/PBXinaFlash/Trixbox



# Configurazione Grandstream GXW4104 con FreePBX/Elastix/PBXinaFlash/Trixbox

**Grandstream Device Configuration**

Status Basic Settings **Advanced Settings** FXO Lines FXO Line Test **Channels** Dial-plan Profile 1 Profile 2 Profile 3

**Phone Number Settings**

Channel(s)	SIP User ID	Authenticate ID	Authen Password	Profile ID
1. 1	101	101		Profile 1
2. 2	102	102		Profile 2
3.				Profile 1
4.				Profile 1

**Call Progress Tones**  
 [Syntax: ch x-y: f1=val@vol,f2=val@vol,c=on1/off1-on2/off2-on3/off3; ... ]  
 Note : f1,f2-frequency(Hz); vol-volume(dB); c-cadence(10ms, 0-continuous)

- Dial Tone: ch1-4:f1=425@-12,f2=425@-12,c=200/200-600/1000;
- Ringback Tone: ch1-4:f1=425@-20,f2=480@-11,c=1000/4000;
- Busy Tone: ch1-4:f1=480@-11,f2=620@-11,c=50/50;
- Reorder Tone: ch1-4:f1=425@-12,f2=620@-11,c=250/250;

**Channel Voice Setting**

- Tx to PSTN Audio Gain(dB): ch1-4:1: (-12-12, default 1)
- Rx from PSTN Audio Gain(dB): ch1-4:0: (-12-12, default 0)
- Silence Suppression(Y/N): ch1-4:Y: (default Yes)
- Echo Cancellation(Y/N): ch1-4:Y: (default Yes)

**Channel Voice Setting**

- Tx to PSTN Audio Gain(dB): ch1-4:1: (-12-12, default 1)
- Rx from PSTN Audio Gain(dB): ch1-4:0: (-12-12, default 0)
- Silence Suppression(Y/N): ch1-4:Y: (default Yes)
- Echo Cancellation(Y/N): ch1-4:Y: (default Yes)

**Channel Specific Setting**

- DTMF Methods(1-7): ch1-4:2: (default 1)  
 (1:in-audio, 2:RFC2833, 3:1+2, 4:SIP Info, 5:1+4, 6:2+4, 7:1+2+4)
- No Key Entry Timeout(X1s): ch1-4:4: (1-9, default 4)
- Local SIP Listen Port: ch1-4:5060++: (default ch1-4:5060++)
- SRTP Mode(1-3): ch1-4:1: (default 1)  
 (1:disabled, 2:enabled but not forced, 3:enabled and forced)

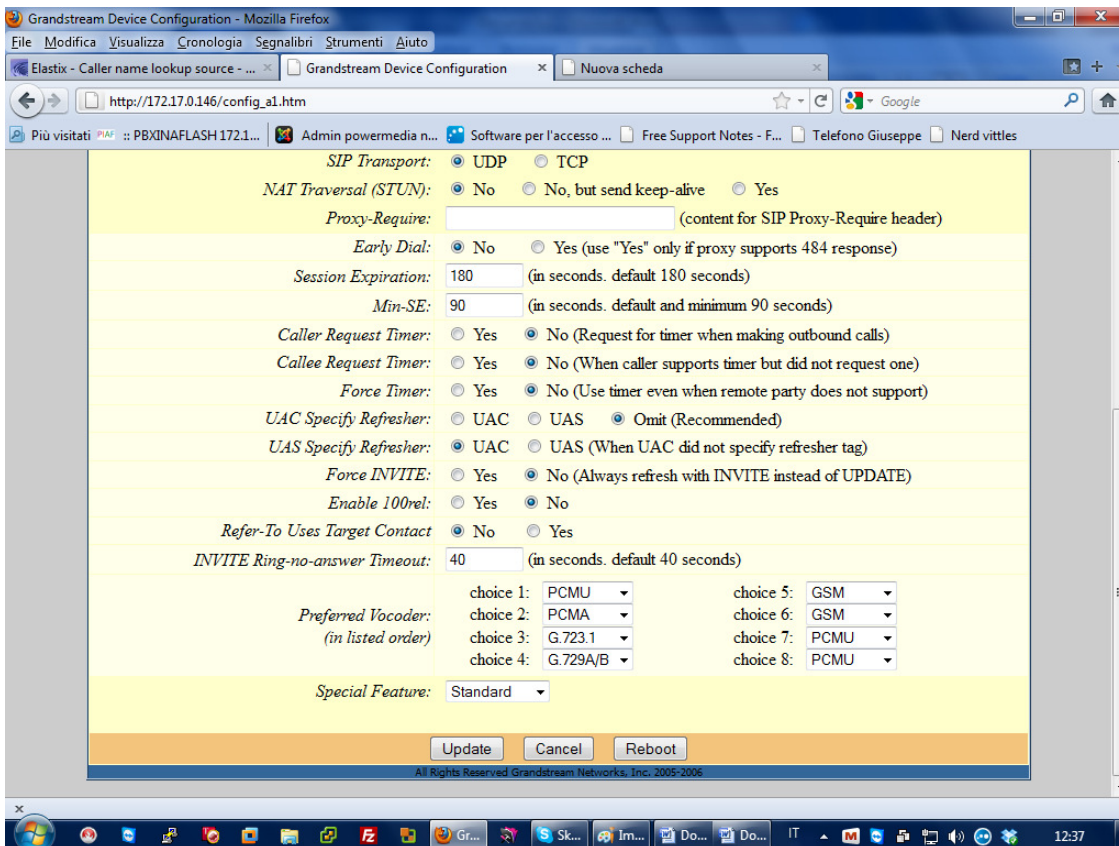
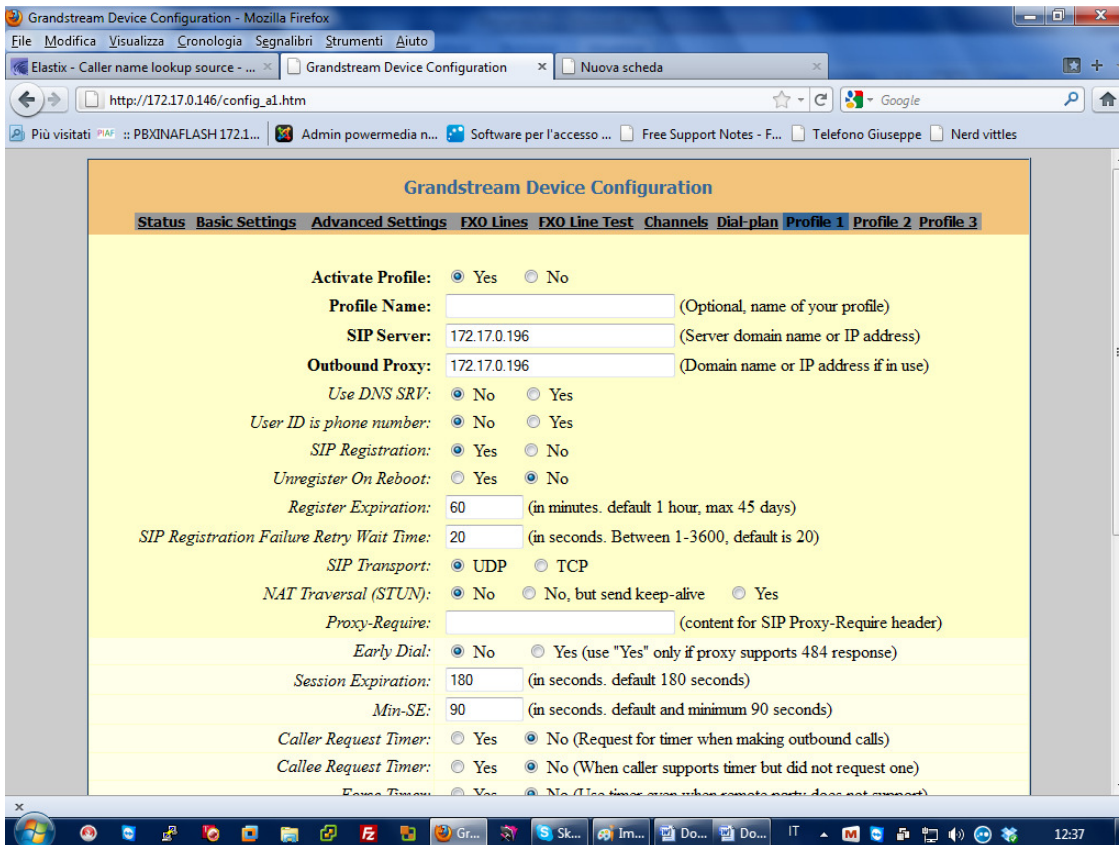
**Port Scheduling Schema (Voip->PSTN)**

- Round-robin and/or Flexible: rr:1-4: (default rr:1-4;)  
 (Syntax: rr: port\_group; [...])  
 (Default: rr:1-4; round-robin of all ports )
- Prefix to Specify Port(1 stage dialing method): 99 (default 99)  
 (Syntax: prefix# + ch# + dialing# will request the ch# per call)  
 (Note that this code has to prefix dialplan number and prefix doesn't impact round-robin)

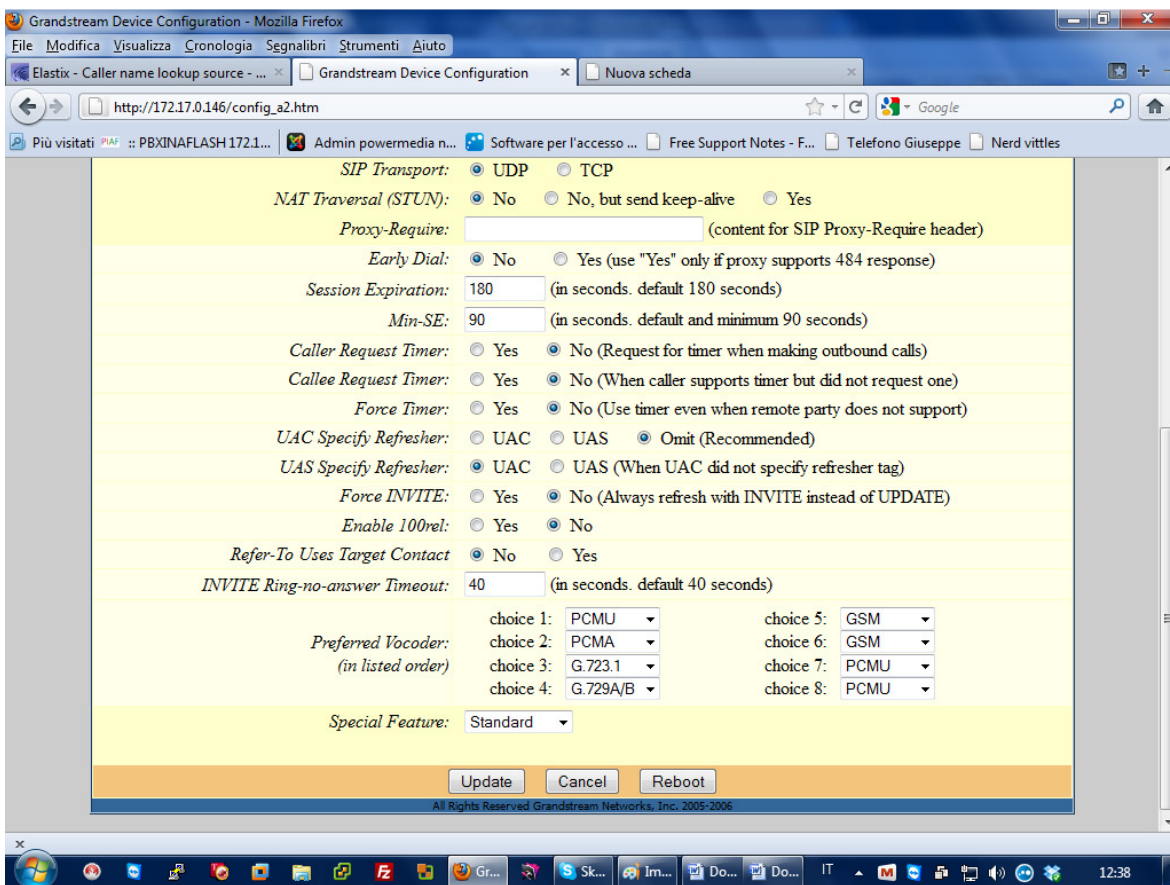
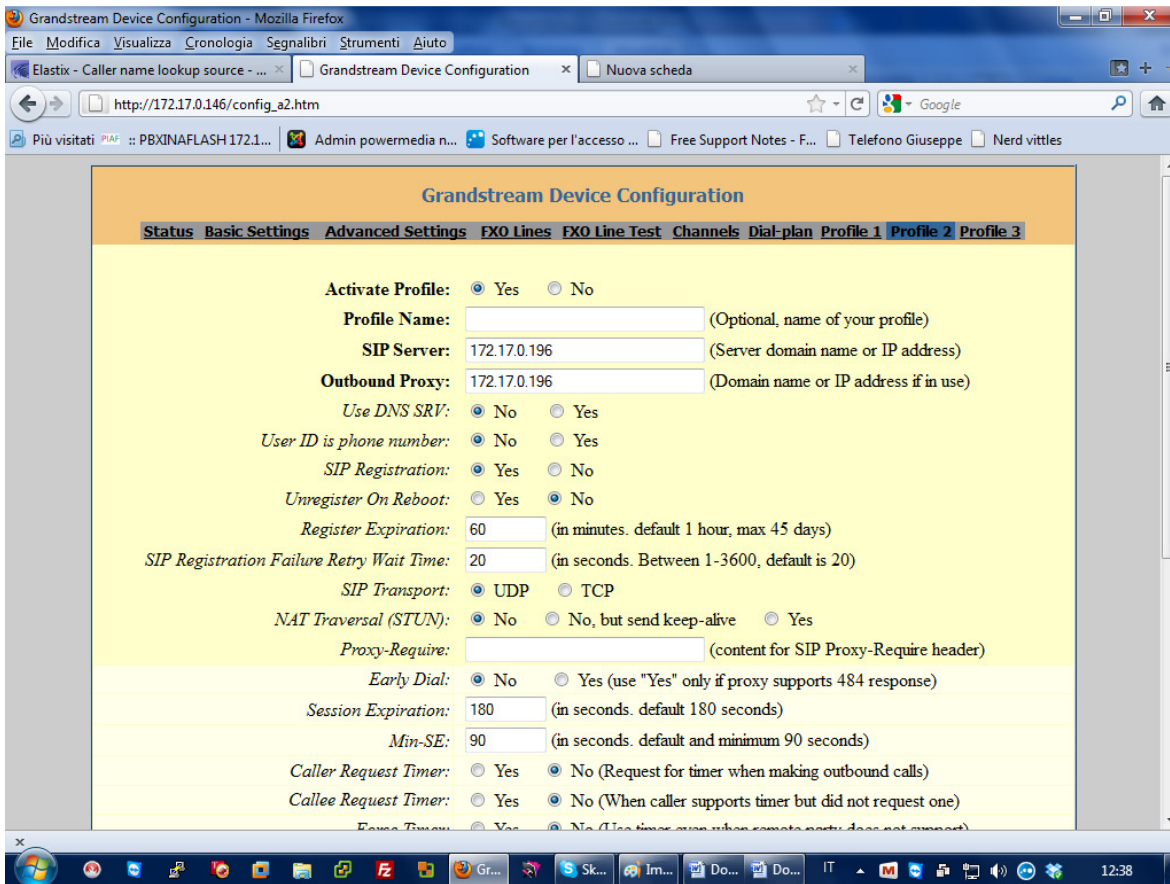
Update Cancel Reboot

All Rights Reserved Grandstream Networks, Inc. 2005-2006

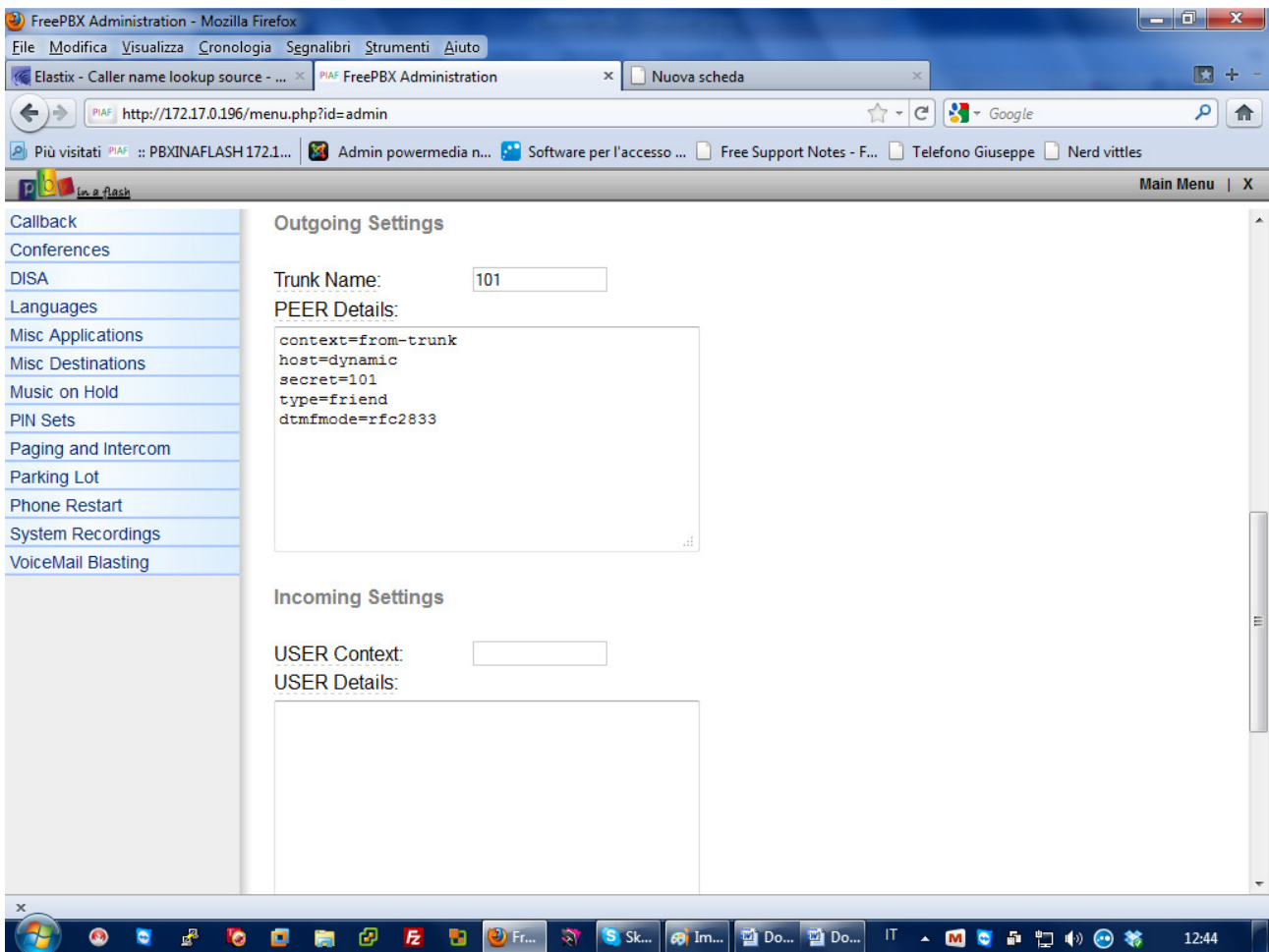
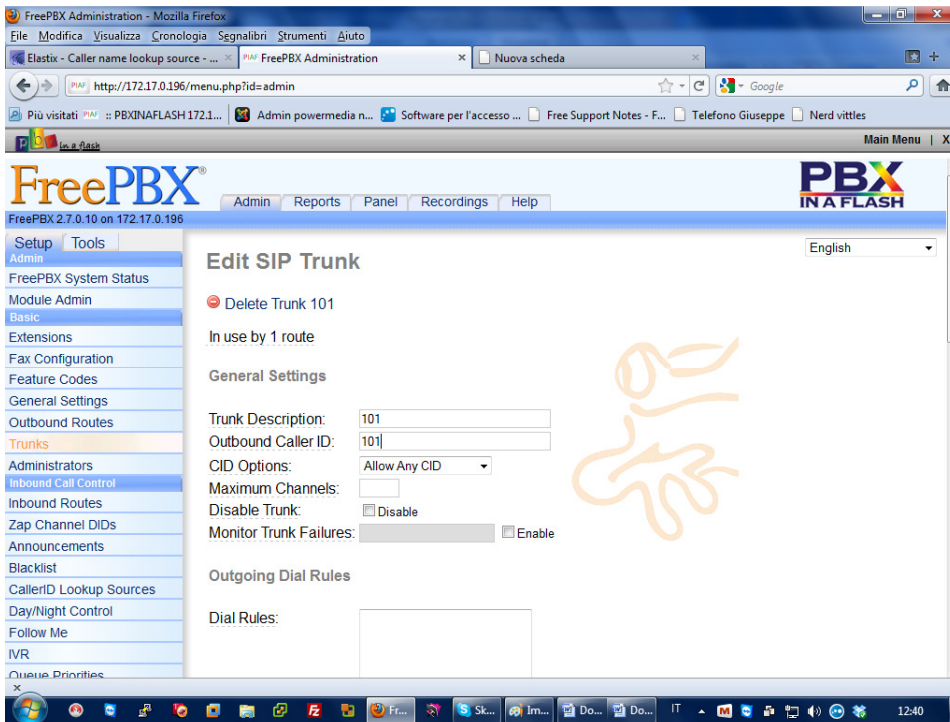
# Configurazione Grandstream GXW4104 con FreePBX/Elastix/PBXinaFlash/Trixbox



# Configurazione Grandstream GXW4104 con FreePBX/Elastix/PBXinaFlash/Trixbox



# Configurazione Granstream GXW4104 con FreePBX/Elastix/PBXinaFlash/Trixbox



# Configurazione Granstream GXW4104 con FreePBX/Elastix/PBXinaFlash/Trixbox

